

Alachua in Distress (AID) Center

Since 2004 in Alachua County child abuse and domestic violence has been steadily increasing. The Alachua County Sheriff's Office has identified the largest crime zone in the county known as the Mike Zone. The area forms a triangle from the intersection of Tower Road and Newberry Avenue down to 24th Avenue and Tower Road and extending East to 75. Most of the population of these neighborhoods are under the age of 25. For example, 75% of the Majestic Oaks neighborhood is under the age of 25 and more than half of those are under the age of 18. The young population mixed with young parents, domestic disputes, and child abuse in their homes has led to an increase in gang activity. Of all the emergency 911 calls made in the county this area receives 80 percent of those calls. More than 90 percent of those calls are abuse and crime related. This is the highest crime in the county, however, there are other high crime areas in the county as well. East Gainesville is one example. This encompasses the surrounding area from NE 23rd Avenue to Depot Avenue and from East University and Waldo Road to Hawthorne Road and SE 15th Avenue.

The Florida Department of Children and Families has developed a comprehensive strategy to build a center in Alachua County that would help neglected children and women who are victims of domestic violence. This facility would serve to:

- Prevent child abuse and domestic violence.
- Address the strengths and needs of individual families.
- Provide an opportunity for agencies and organizations to share in the costs of preventing child abuse and neglect.
- Provide resources for individuals.

This type of help-center has always proved to reduce crime in any given area it is placed. We will be looking at three factors when deciding out location: the economic domain, the education domain, and the socio-emotional domain of the area. We will present three possible locations for building this facility.

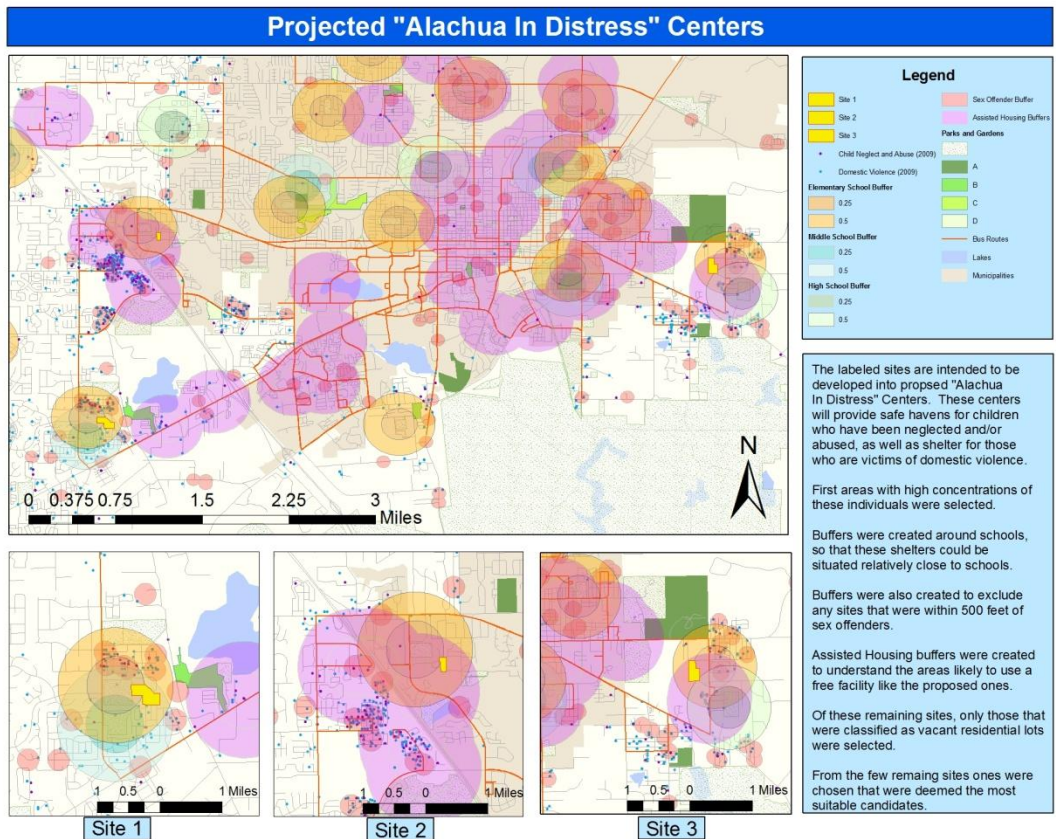
Our scientific method techniques helped to systematically find locations according to our most important criteria. First, we looked at the areas with the highest concentrations of domestic and child abuse. After narrowing those layers to three general places in Alachua County, we wanted to incorporate proximity to schools. We believe that placing the community center equidistant from different schools will attract more young people in need and be equally accessible for different school districts. Our next requirement was to choose an area generally separate from sex offenders. This was difficult because the majority of sex offenders are found near schools. By establishing an exclusionary buffer for sex offenders, we were able to pick appropriate properties. By prioritizing our requirements, we were able to methodically find the right properties step by step. We will place our projected sites in areas with assisted-housing by using the respective layer. This will ensure that the center will benefit low-income families.

The tools in ArcGIS were key in choosing our properties. Multiple ring buffers

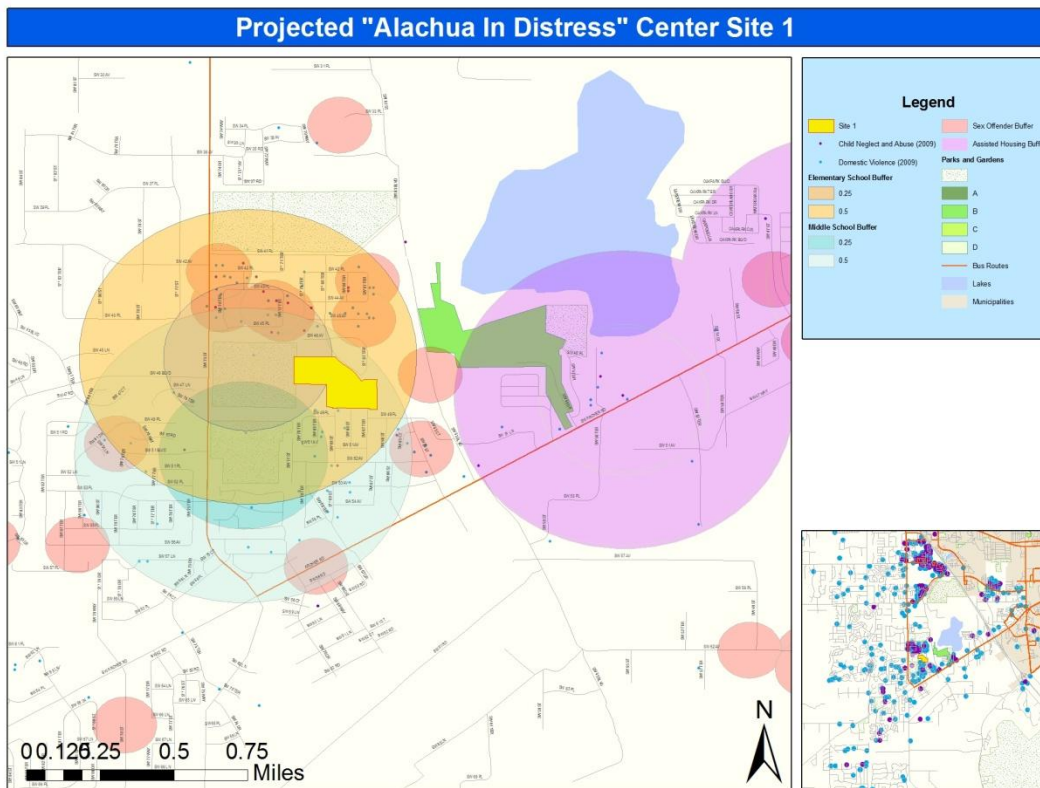
were used to select properties that were in the general vicinity of elementary and middle schools. Exclusionary buffers were made to ensure that the property also did not intersect sex offenders. The buffer around sex offenders was the legal 500 feet radius. The tax parcel layer was the most used tool. This layer was selected by attributes to exclude agricultural and commercial properties. We also selected to build on an undeveloped property because this allows for unlimited development. Without specific building restrictions, this community center has unlimited potential and can become a great part of the county.

We decided the three best potential locations for our site will be:

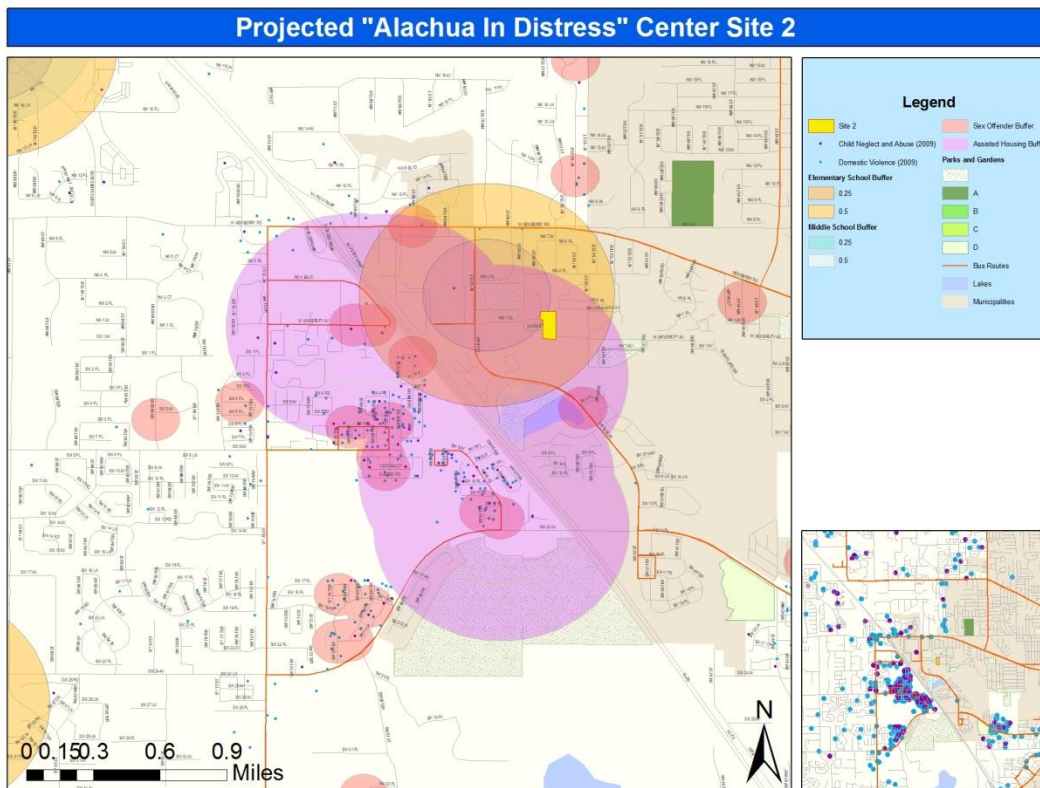
- Off of Tower Road near Archer Road at SW 69th Terrace.
- Off of SW 75th Street near Newberry Road at NW 59th Street and NW 93rd Avenue.
- East Gainesville between University and Highway 20 at SE 4th Avenue and SE 39th Street.



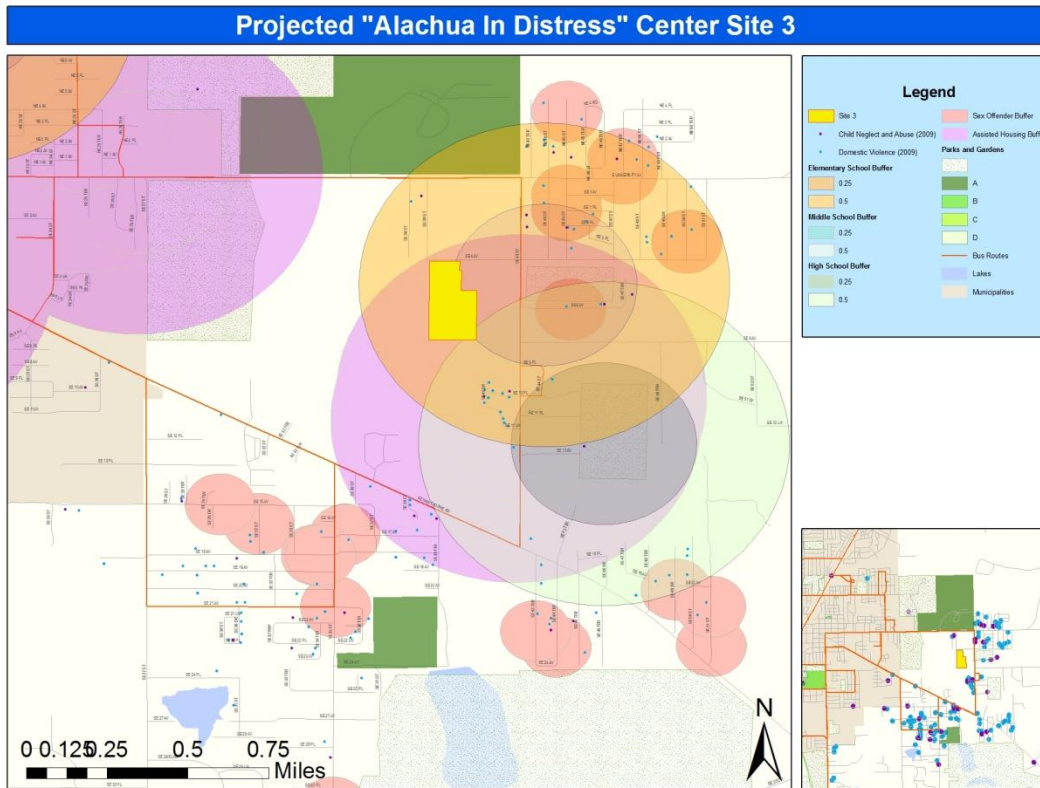
The Tower Road area near Archer Road is a high child abuse and domestic violence area. There are lots of children ages 5-14 in this area. It has a bus route and a recreational park, Kanapaha Park, a little more than a quarter of a mile from our proposed site. There is an undeveloped residential site on SW 69 Street that is ideal; this site is 18.387 acres. This site has a plethora of acreage which could provide children with a safe place to play. It is central to Kanapaha Middle School and Wiles Kimball Elementary School. This area has a lot of assisted living. By placing sites near this parcel, it will keep children away from gangs by giving them a place to play and feel safe.



The NW 59th Street and NW 93rd Avenue location is also a high child abuse and domestic violence area. This location is 4.2 acres, it is more limited for onsite expansion. It is half a mile away from North Florida Regional Medical Center. This section has a high concentration of domestic abuse. It is easy-accessible for many locals. It is within a half mile of Myrna Terwilliger Elementary School. Although the concentration of domestic abuse is on the West side of I-75, we have decided it is more appropriate to have the facility on the East side of I-75. It will still be easy accessible by foot, bike, and bus. This area not only offers better prospective property, but it is also closer to the elementary school.



The East Gainesville expanse is also a high-crime, high-poverty area with lots of children. East Gainesville does not have many options and is many times over-looked. There is an undeveloped area of interest in East Gainesville between East University Avenue and West Hawthorne Road that would be plausible. This area would provide 17.452 acres. There were less reports of domestic abuse here so we chose to go more South East where there are more reports. The property is in an overlap between the elementary and high school buffer; it is near a bus route. In this vicinity, there are lots of churches that could be potentially be involved in the facility. By placing a community center within walking distance, this would increase foot traffic as well as general visitors. North of this area is another center called the Greater Northeast Community Center. This is the only similar center in East Gainesville. The Morning Side Nature Center is also near the potential East Gainesville site. This would allow for more outdoor recreation and environmental education capabilities for the center. Because the region has a high concentration of both crimes, it is obvious there is a void that this center has the potential to fill.



The AID center will provide resources and opportunities for child abuse and domestic violence prevention. After much analysis, these are the best-suited neighborhoods to place our facility at. They address the areas with the highest concentrations of domestic and child abuse. They also provide easy accessibility by being located along bus routes and near elementary, middle, and high schools. These factors will allow the center to serve a large amount of people who are in need. The properties we have chosen also allow for a variety of opportunities for the center. The large acreage of each location, allows for unlimited opportunities according to size and onsite recreation. Alachua County is in desperate need of a center that will combat the pressures of domestic and child abuse. This community center would be a great effort at remedying this problem.